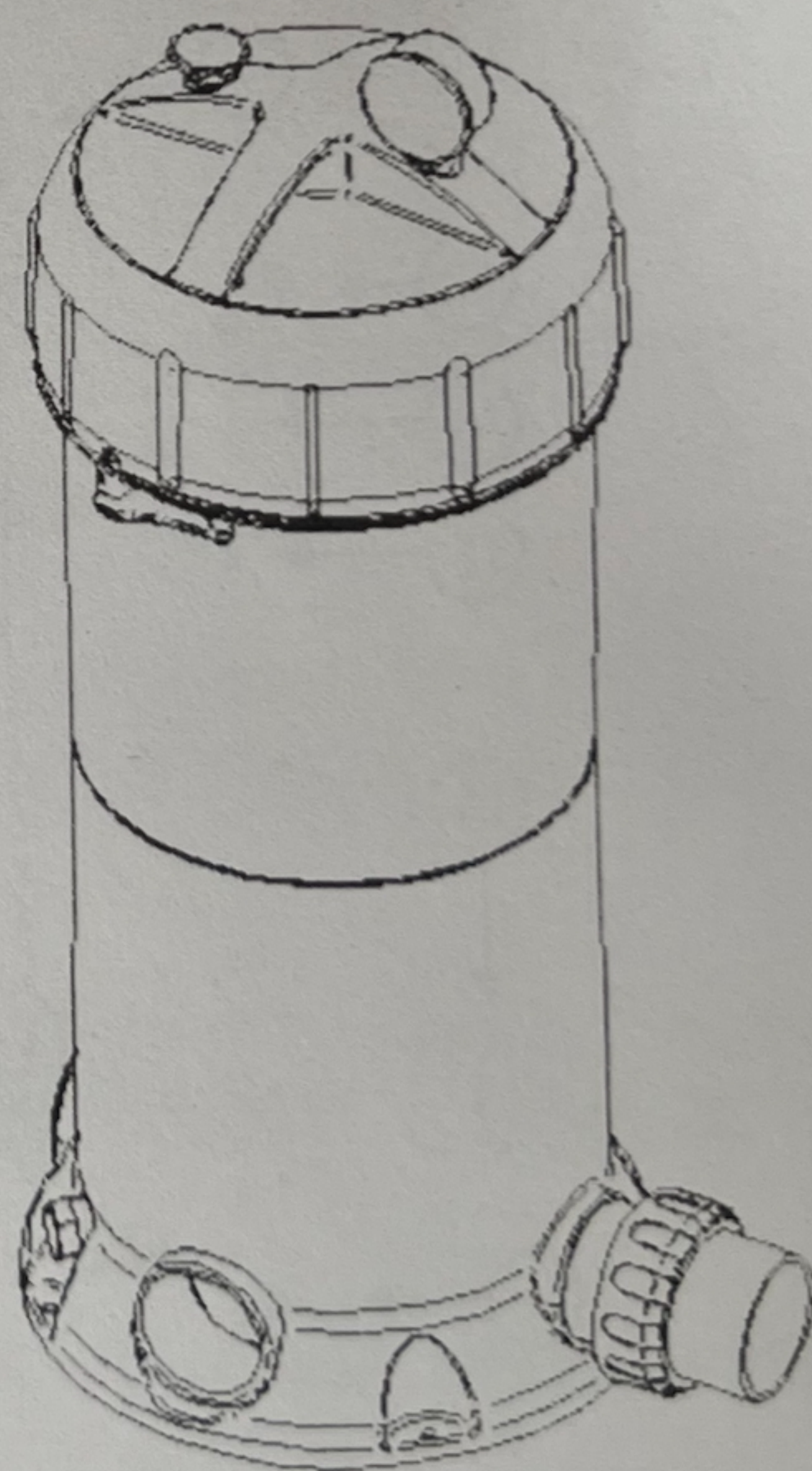
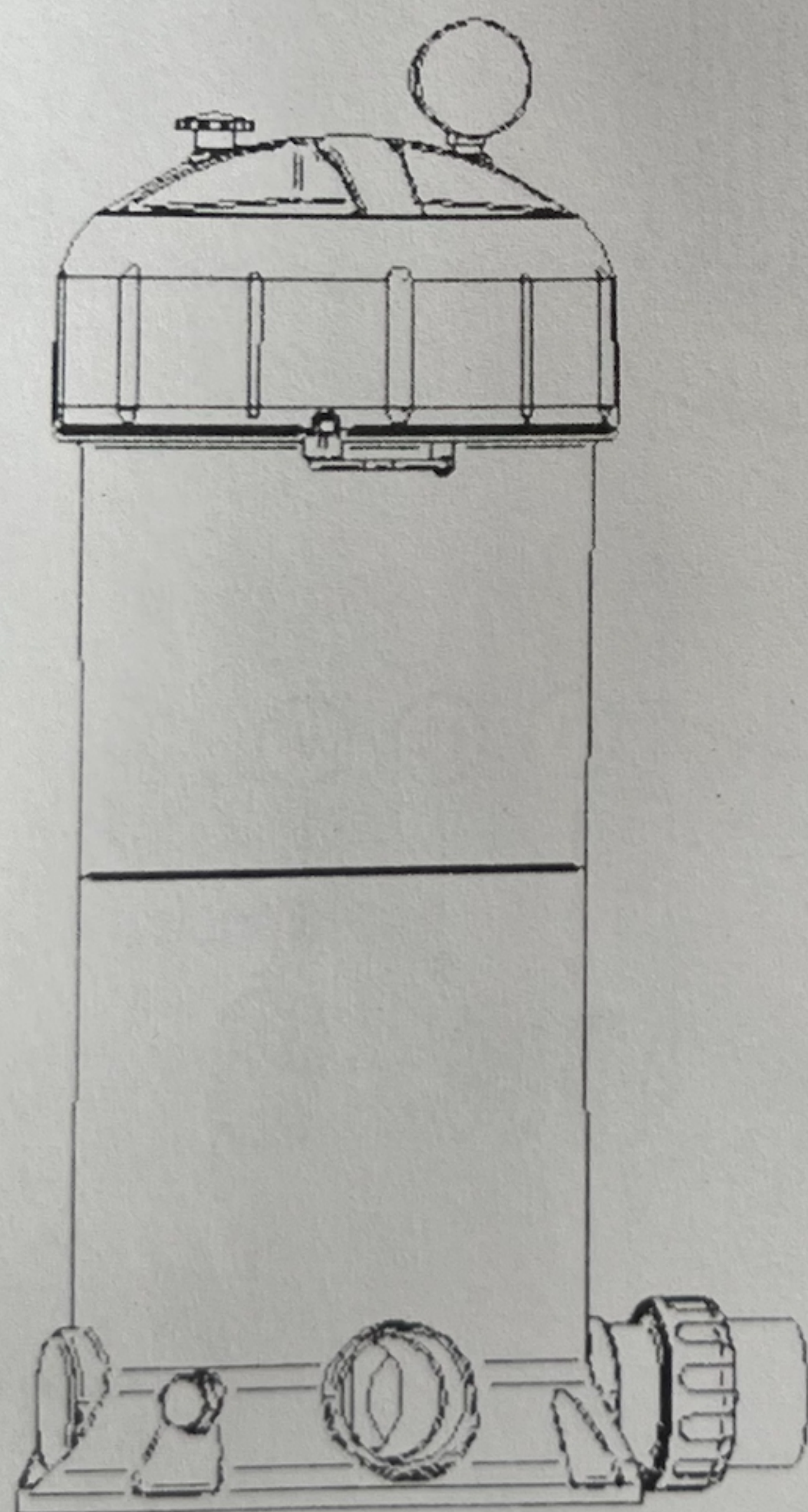


POOL-QUIP

PQ SERIES

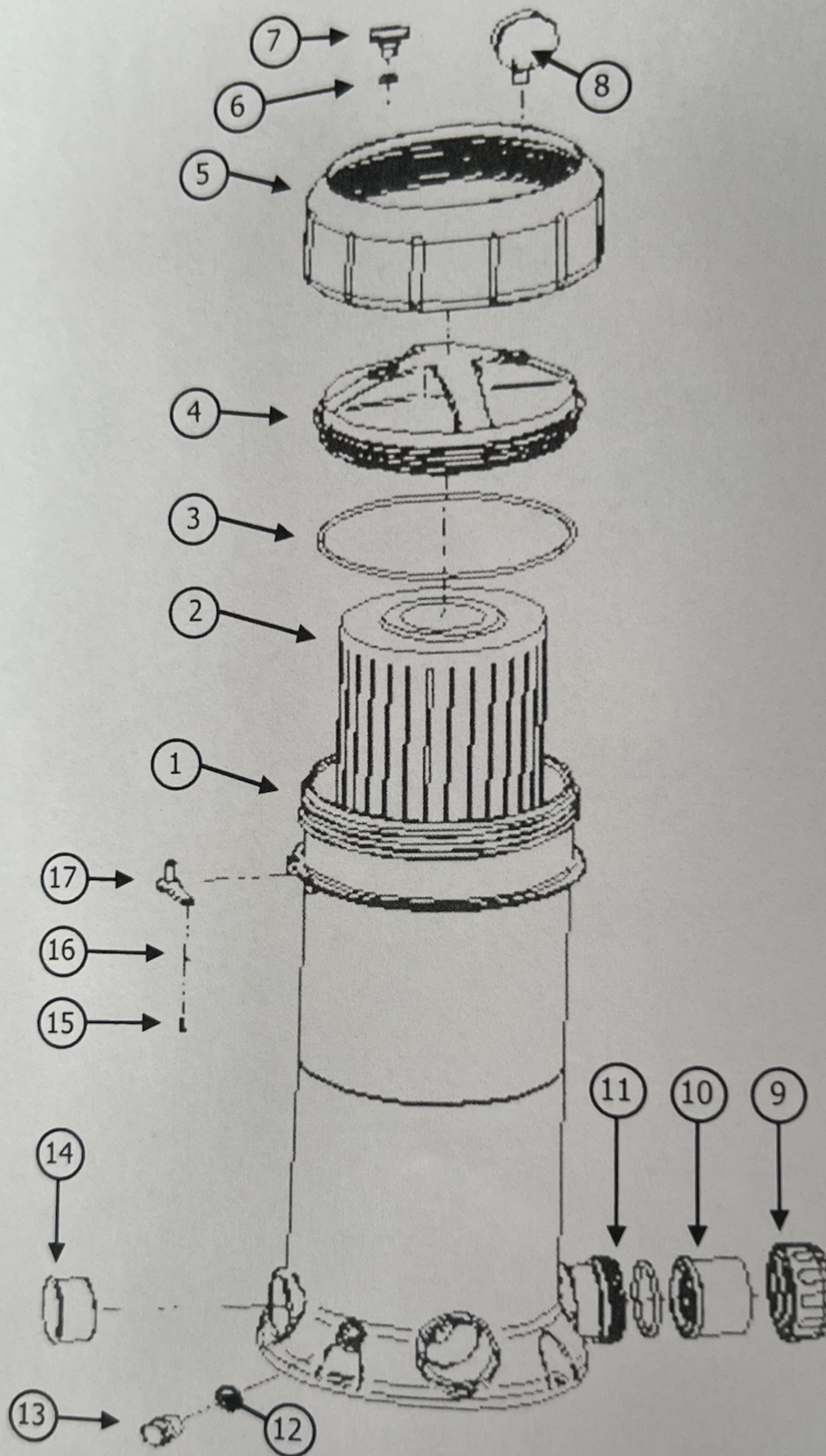
SWIMMING POOL AND SPA

CARTRIDGE FILTER



INSTALLATION AND OPERATION MANUAL

EXPLODED DIAGRAM



Item	Title	Quantity
1	Tank Base	1
2	Element	1
3	Lid O Ring	1
4	Lid	1
5	Lock Ring	1
6	Air Bleed O Ring	1
7	Air Bleed	1
8	Pressure Gauge	1
9	Mac Union Nut	1

Item	Title	Quantity
10	Mac Union Tail	2
11	Mac Union O Ring	2
12	Drain Bung O Ring	1
13	Drain Bung	1
14	Blank Cap	1
15	Safety Lock Lever Screw	1
16	Safety Lock Lever Washer	1
17	Safety Lock	1

POOL QUIP® – DESIGN AND FUNCTION

The PQ Series range of cartridge filters have been developed together with leading swimming pool and spa professionals. The result is a filter which gives many years of trouble free performance with high quality water filtration.

The polyester filter element offers fine grade filtration and enables longer filtration cycles due to the compact design of the cartridge element pleats.

Swimming pool or spa water is pumped through the polyester filter element where suspended particles are trapped, resulting in sparkling clear water returning to your swimming pool or spa.

INSTALLATION

Filter Site and Location

PQ Series Cartridge Filters must be installed to the following requirements:

- (a) A level concrete slab or similar flat and stable site.
- (b) Plumbed as close as practicable to swimming pool or spa using 40 mm or 50 mm pipe. For lengths over 15 metres, pipe of 50 mm is recommended.
- (c) For cleaning, sufficient clearance height must allow for removal of cartridge filter, lock ring, lid and filter element. *Refer to Page 6 (Dimension B).*
- (d) Sufficient space allowed around cartridge filter and attached plumbing for routine maintenance and cleaning.
- (e) Drainage for any water that could accumulate around the filter and any electrical components is essential.
- (f) For weather protection the PQ Series Cartridge Filter is constructed of corrosion resistant materials, however, it is recommended that the entire filtration system be adequately protected from the weather.

Filter Positioning

For installations where the filter is below the water level of the swimming pool or spa, isolating valves should be fitted either side of the filter to aid cleaning and maintenance.

The PQ Series Cartridge Filter has two inlets and outlets but only one of each is used.

When choosing inlet and outlet ports consideration should be given to the suction line and return line positions. This will leave two vacant ports to which the blank caps provided must be fitted.

Use the mac unions for the inlet and outlet ports ensuring the o-rings are correctly seated.

Ensure mac unions are hand tight only.

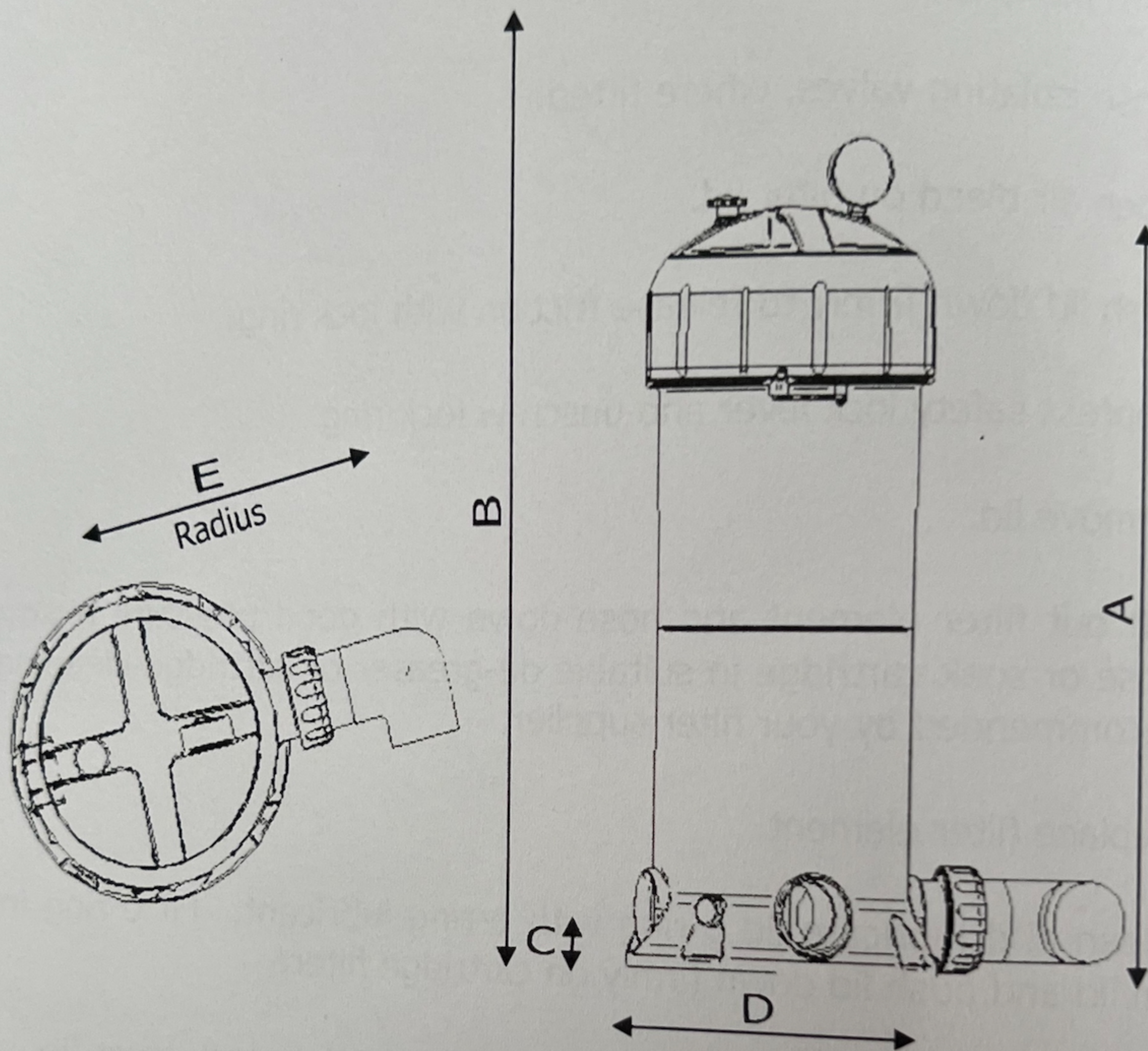
FILTER OPERATION

- (a) Ensure pump is primed.
- (b) Ensure isolating valves, where fitted, are open.
- (c) Turn pump on.
- (d) Observe the "clean filter" running pressure, take note and record this pressure. The "clean filter" pressure will vary due to pump and pipe size, distance and plumbing configuration.
- (e) Filter cycles – the filter operation time will vary depending on swimming pool or spa design, size, heating requirements etc. Consult your pool builder or supplier.
- (f) The polyester filter element will require cleaning when the pressure gauge reading is between 40 Kpa - 60 Kpa above the "clean filter" running pressure, as mentioned above.

FILTER ELEMENT CLEANING PROCEDURE

- (a) Turn pump off.
- (b) Close isolating valves, where fitted.
- (c) Open air bleed on filter lid.
- (d) Push lid down firmly to release friction with lock ring.
- (e) Depress safety lock lever and unscrew lock ring.
- (f) Remove lid.
- (g) Lift out filter element and hose down with good pressure from garden hose or soak cartridge in suitable de-greaser or cartridge cleaning agent recommended by your filter supplier.
- (h) Replace filter element.
- (i) Clean and lubricate lid o-ring with o-ring lubricant. Fit o-ring into seat on lid and push lid down firmly on cartridge filter.
- (j) Screw lock ring down fully, stopping when safety lock lever fits correctly into recess.
- (k) Close air bleed valve on lid.
- (l) Open isolating valves, where fitted.

DIMENSIONS



Model	A Height of Assembled Filter complete with Gauge	B Element Removal Height	C Centre of Mac Union to Base Height	D Diameter of Tank Base	E Radius of Filter complete with Mac Union and 90° Elbow Fitted
P4 50	570mm	870mm	50mm	285mm	310mm
P4 100/75	700mm	1050mm	50mm	285mm	310mm
P4 150/200	950mm	1450mm	50mm	285mm	310mm

TROUBLE SHOOTING

Low Flow:

- Clogged polyester filter element. Refer to filter element cleaning procedure.
- Blockage or restriction in pump or plumbing lines.

Lock Ring won't unscrew:

- Push lid down firmly to release friction with lock ring.
- Safety lever not depressed.

Lid Jammed:

- Check air bleed is open on filter lid.

Debris Returning to

Swimming Pool or Spa:

- Check condition of polyester cartridge element. Replace if split or polyester pleats or moulded ends of cartridge filter are damaged.

Filter
with
n and
Fitted

m

m

m

POOL-QUIP

TECHNICAL DATA

Model	Maximun Flow Rate (Litres Per Minute)	Maximun Operating Pressure (Kpa)	Maximun Operating Temperature (Kpa)	Eight Hour Turnover (Litres)
P4 50	325	280	50	150,000
P4 100/75	370	280	50	177,600
P4 150/200	470	280	50	225,600

TERMS OF WARRANTY – Refer details on warranty card

The cartridge filter is covered by a limited 5 year warranty
Cartridges are an expendable item

MANUFACTURED AND
DISTRIBUTED BY
POOL QUIP LTD